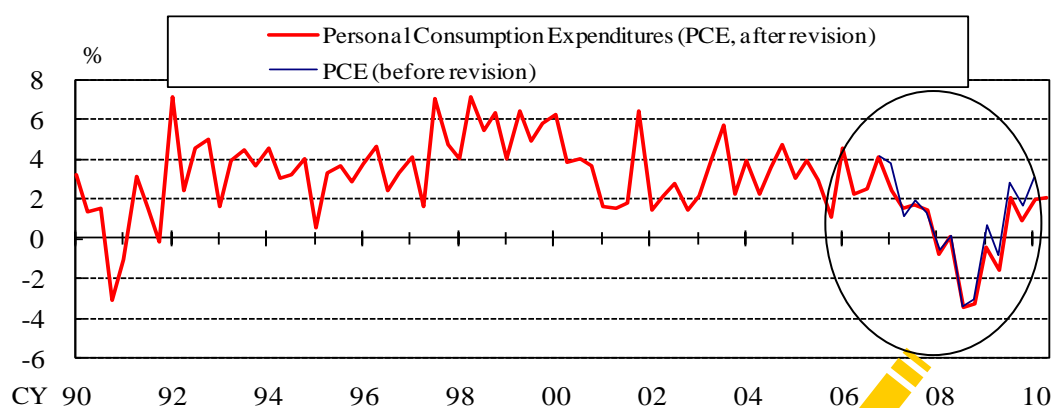
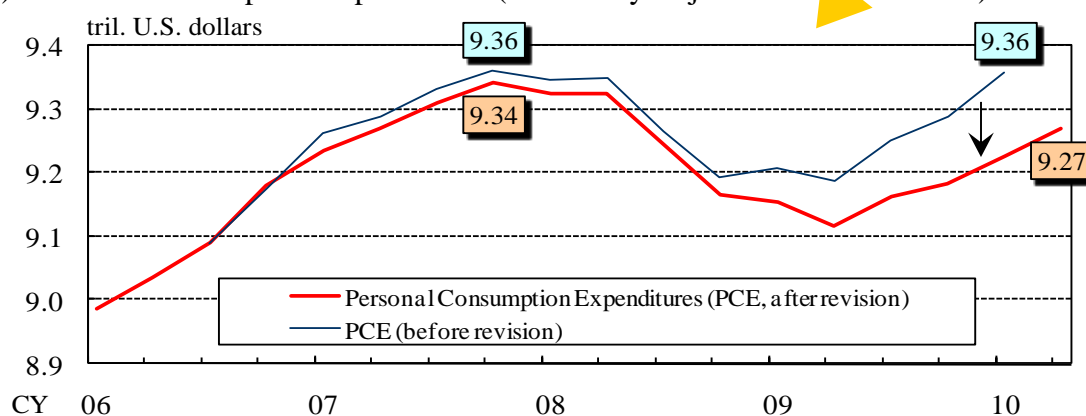


## Personal Consumption Expenditures and Personal Saving Rate in the United States

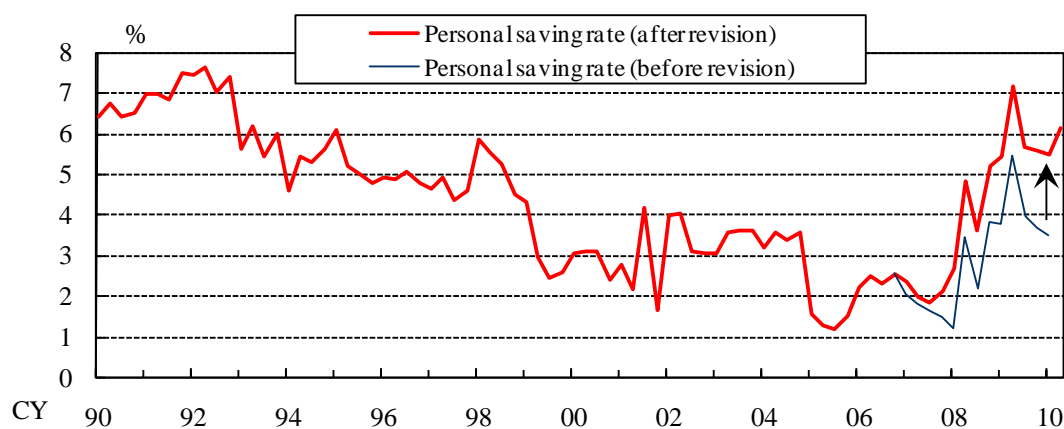
### (1) Personal Consumption Expenditures (Seasonally Adjusted at Annual Rates, Percent Change from the Preceding Period)



### (2) Personal Consumption Expenditures (Seasonally Adjusted at Annual Rates)

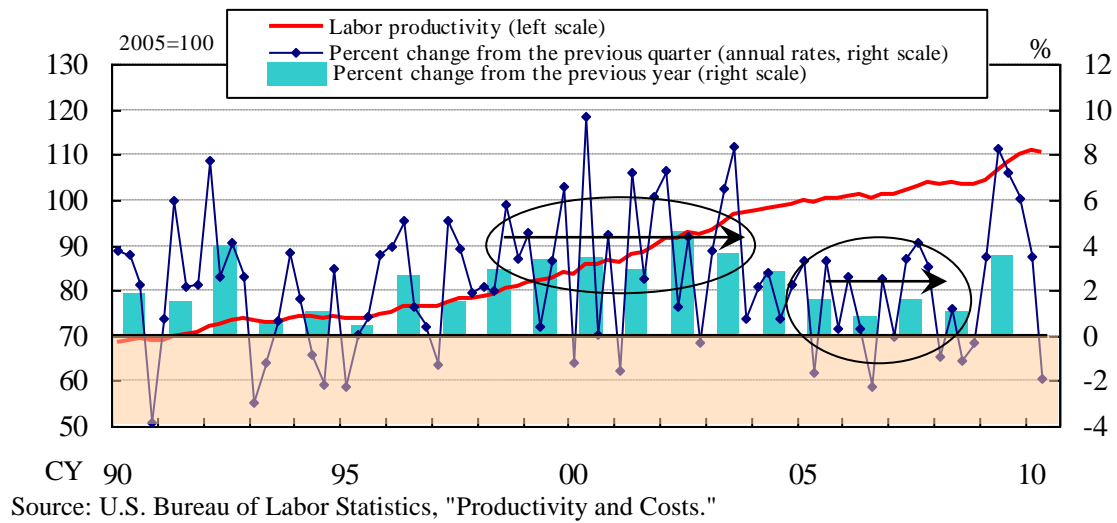


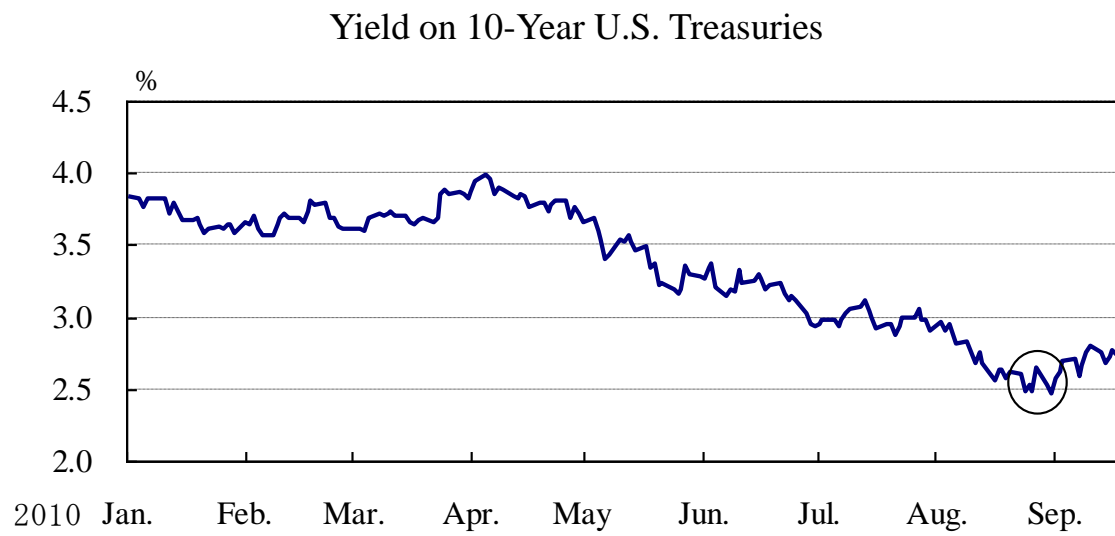
### (3) Personal Saving Rate (Percent of Disposable Income, Seasonally Adjusted)



Source: U.S. Bureau of Economic Analysis, "National Income and Product Accounts."

## Labor Productivity in the United States

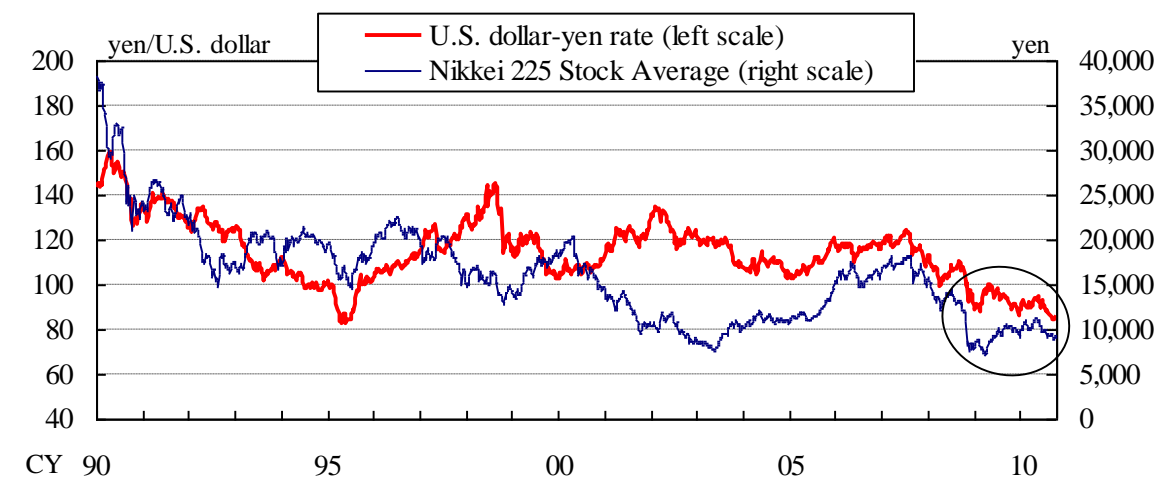




Source: Bloomberg.

## Developments in Financial Markets

### (1) U.S. Dollar-Yen Rate and Nikkei 225 Stock Average



Source: Bloomberg.

### (2) Corporate Profits and Stock Prices

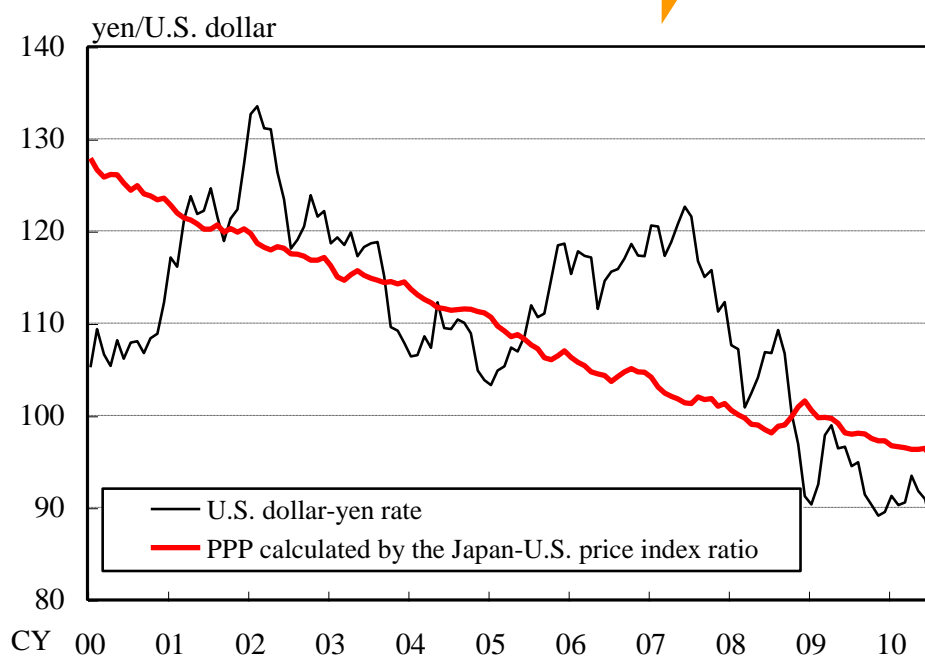
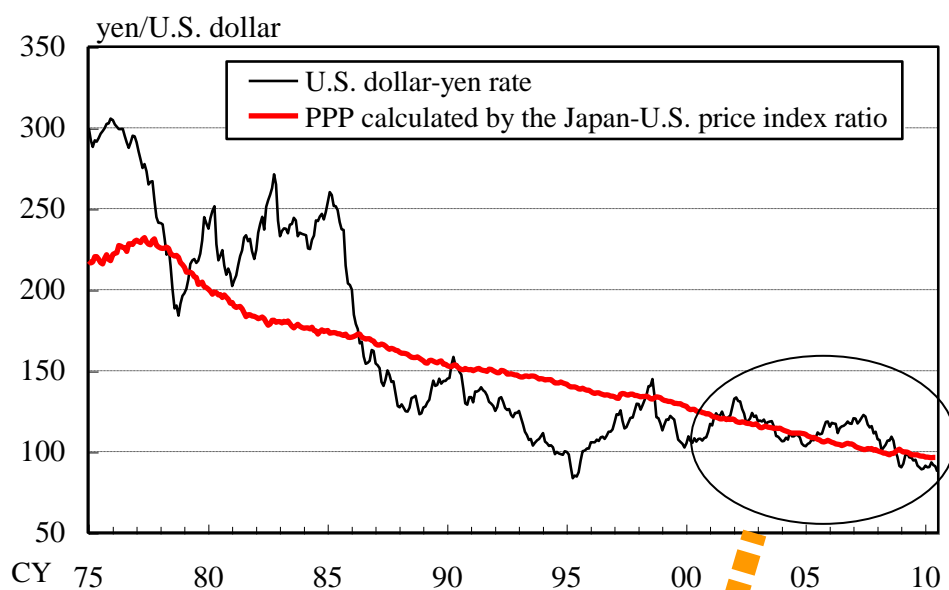
Corporate profits (y/y change, percent)				Stock prices (yen, U.S. dollar, percent)			
	CY 2008	CY 2009	CY 2010		Aug. 31, 2008	Sep. 17, 2010	% change
Japan (ordinary profits)	-33.7	-9.4	+70.0	Nikkei 225 Stock Average	13,072	9,626	-26.4
United States (profits before tax)	-16.4	-0.4	+27.4	Dow Jones Industrial Average	11,543	10,607	-8.1

Note: Annual figures for corporate profits for calendar year 2010 are calculated by multiplying the total figures for the first half of the year by two.

Sources: Ministry of Finance, "Financial Statements Statistics of Corporations by Industry, Quarterly";

U.S. Bureau of Economic Analysis, "National Income and Product Accounts."

### Purchasing Power Parity (PPP) and U.S. Dollar-Yen Rate



Note: PPP is calculated using the consumer price indexes of Japan and the United States.

Sources: Ministry of Internal Affairs and Communications, "Consumer Price Index";

U.S. Bureau of Labor Statistics, "Consumer Price Index."

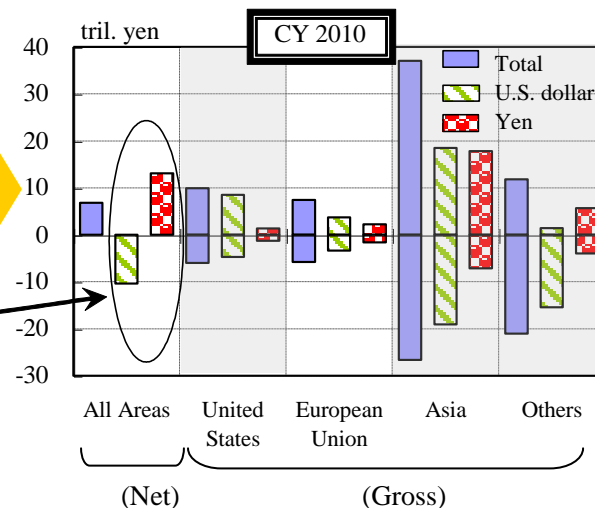
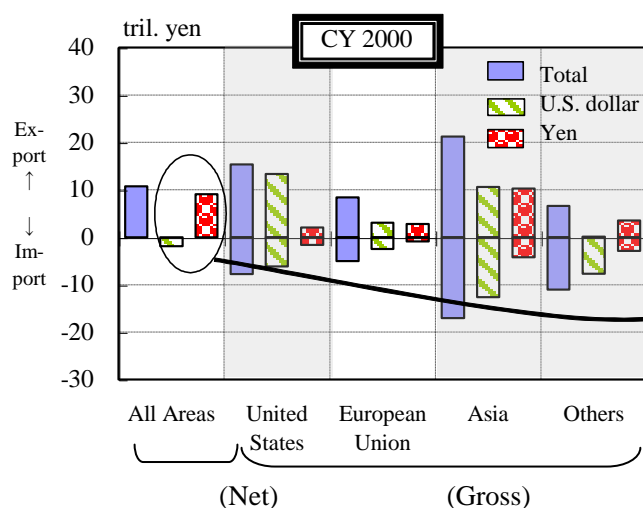
## Currency Composition and Value of Japan's International Trade

### (1) Currency Composition

	Second half of CY 2000 (%)				
	Total exports	United States	European Union	Asia	Others
U.S. dollar	52.4	86.7	36.2	50.0	1.1
yen	36.1	13.2	33.5	48.2	53.7
	Total imports	United States	European Union	Asia	Others
U.S. dollar	70.7	78.7	49.7	74.0	69.6
yen	23.5	20.8	17.5	24.8	26.1

	First half of CY 2010 (%)				
	Total exports	United States	European Union	Asia	Others
U.S. dollar	48.6	85.9	49.9	49.9	12.4
yen	41.0	14.1	30.1	48.1	48.2
	Total imports	United States	European Union	Asia	Others
U.S. dollar	71.7	78.1	58.0	71.7	73.6
yen	23.6	21.4	28.0	26.8	19.0

### (2) Value (Declarations to Customs)



Note: Annual figures for the trade value for calendar year 2010 are calculated by multiplying the total figures for the first half of the year by two.

Source: Ministry of Finance, "Trade Statistics," "Currency Composition of International Trade."